

International Program

Batch XVI - 2024 / I

10 POINT PDUs | ERMA Certification Holder

12 PSB | LSP MKS Certification Holder

International
Benchmarking and Master Class

ESGRC

Environmental
Social
Governance
Risk Management
Compliance

Germany-Switzerland | 22-29 September 2024

www.thegrfrontiers.com

Reach Us:
CRMS Secretariat Team
secretariat@crmsindonesia.org
+62 81 22 333 075

Organized by:



In Cooperation with:



Overview

ESG (Environmental, Social, and Governance) and GRC (Governance, Risk, and Compliance) relevance in Germany and Switzerland has been highlighted as companies recognize the importance of integrating ESG considerations into their overall governance framework and risk management. This integration enables better decision-making, risk mitigation, and ongoing compliance with sustainability standards and regulations.

According to some reports, business leaders in various countries, including the US, Brazil, the UK, Germany, and India, agreed that companies that prioritize ESG policies are more likely to outperform competitors that do not prioritize such policies. Additionally, Switzerland has a commitment to reducing its carbon footprint, and businesses are encouraged to adopt sustainable practices, including energy-efficient technologies.

Germany and the wider European context have specific regulations aimed at promoting ESG and sustainability practices. For instance, the country has enacted a due diligence law that mandates companies to disclose ESG risks and impacts in their supply chain. The European Union has also approved significant new ESG disclosure rules, such as the Corporate Sustainability Reporting Directive (CSRD).

Overall, both Germany and Switzerland acknowledge the significance of ESG and GRC in the business landscape. Integrating ESG factors into governance and risk management practices is seen as vital for long-term success and resilience in the face of evolving societal and environmental expectations.

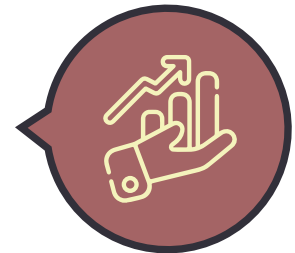
The Program

This one-week program, consisting of benchmarks to prominent organizations in Germany and Switzerland, as well as a master class, will elevate your understanding and prowess in the ESG-GRC Integration.

Some interesting topics to be discussed at the benchmarking visit:



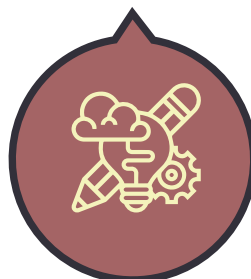
The connection between GRC and ESG in relation to SDGs (Sustainable Development Goals) and how organizations address this issue at the board level.



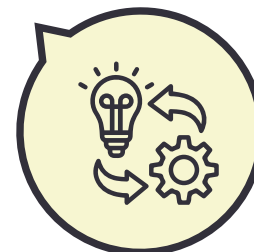
Strategies for effectively addressing ESG challenges and maximizing the potential benefits and opportunities that ESG initiatives offer.



The trends and growth of ESG investments, as well as strategies for implementing effective ESG practices and managing sustainability risks.

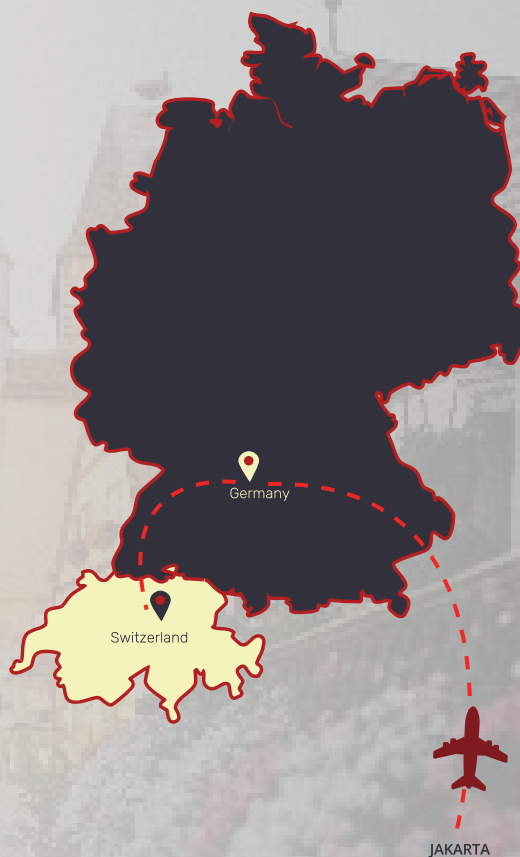


Designing an efficient ESG strategy that benefits all stakeholders and evaluating its effectiveness at the implementation level.



Incorporating ESG into the business process and how organizations can align their strategy with operational practices to effectively implement ESG initiatives.

Visited Organizations*:



ITINERARY



Sunday, Sep 22 th , 2024	Arrive in Germany	L D	Thursday, Sep 26 th , 2024	Benchmarking visit*	B L D
Monday, Sep 23 th , 2024	Benchmarking visit*	B L D	Friday, Sep 27 th , 2024	Benchmarking visit*	B L D
Tuesday, Sep 24 th , 2024	Benchmarking visit*	B L D	Saturday, Sep 28 th , 2024	Master Class on ESGRC*	B L D
Wednesday, Sep 25 th , 2024	Transfer to Switzerland	B L D	Sunday, Sep 29 th , 2024	Depart to Jakarta	B

B = Breakfast; L: Lunch; D: Dinner
The itinerary may be subject to change

*) to be confirmed

PREVIOUS VISITED COUNTRIES



BENCHMARKING

Our Previous Visited Countries



Some of the previous visited institutions:



WHY THIS PROGRAM



To keep up with the ever-changing global business landscape, it is essential for both public service and business professionals to regularly update their knowledge in risk management, compliance, governance (GRC), and Environmental, Social, and Governance (ESG). In order to support this continuous learning, we have developed Master Class and Benchmarking programs that aim to provide participants with a comprehensive understanding of ESG and GRC. These programs are specifically designed to assist professionals in implementing effective ESG practices within their organizations, whether in the corporate or public service sector.

LEARNING OUTCOMES

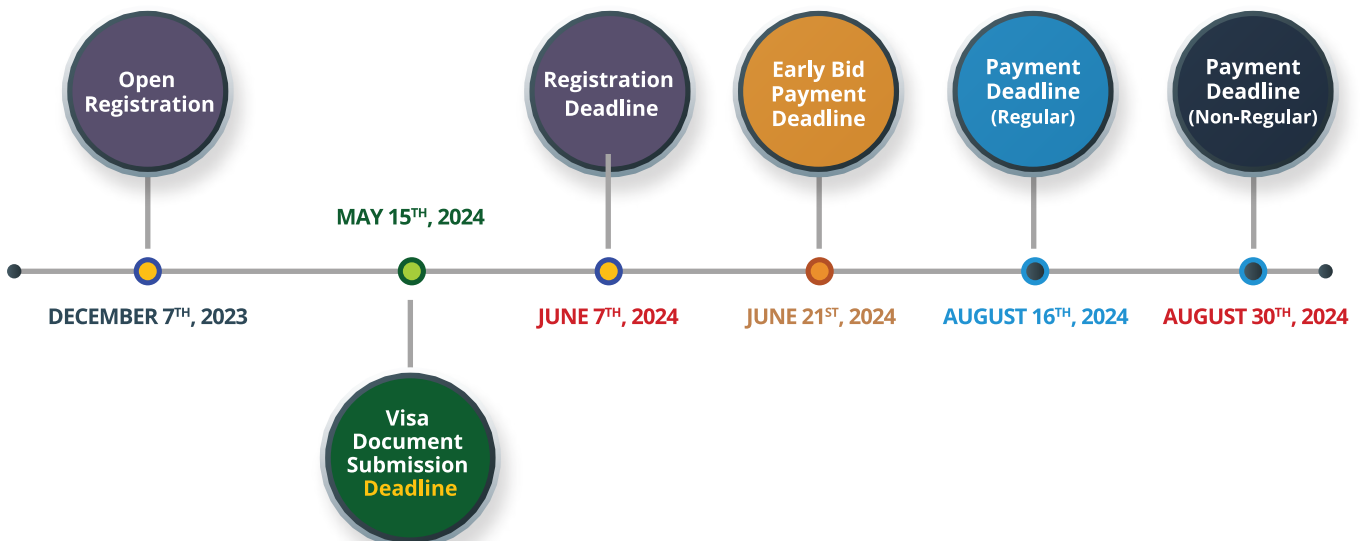
- ▲ Gain a more comprehensive understanding of the various aspects of ESG and governance toward SDG.
- ▲ Help participants enhance their capabilities in ESG and GRC practices. They will also help them identify areas of their organizations where they can improve their performance.
- ▲ Understand how to benchmark their organizations' ESG and GRC practices against those of other companies in Germany and Switzerland.
- ▲ Improve their capabilities in addressing the challenges and opportunities of today's digital world
- ▲ Expand the network of world-class professionals.

WHO SHOULD PARTICIPATE



- ▲ Members of the Board of Directors and Board of Commissioners
- ▲ Vice President or Senior Management Members
- ▲ Members of Risk Oversight Committee
- ▲ Members of Audit Committee
- ▲ ESG Consultants
- ▲ High Level Government Officers
- ▲ ESG Professionals

REGISTRATION TIMELINE



Organized by:



In cooperation with:



CONTACT US

CRMS

Jl Batununggal Asri No. 18
Bandung 40267, Indonesia
Phone: (+62)22 8730 1035
Mobile: (+62)811 22 333 075

Email: secretariat@crmsindonesia.org
www.crmsindonesia.org

www.thegrfrontiers.com

OUR SOCIAL MEDIA

